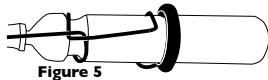
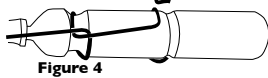
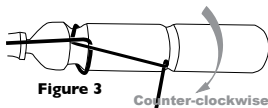


Battery Installation & Replacement

Caution: Do not allow the battery pin to contact battery wire connector as it may lead to discharge of the battery completely.

- i.1 Thread the battery-pin-O-ring on the pin of the battery (Figure 1)
- i.2 Insert the battery into the front loop of the battery wire connector while leaving the end loop hanging outside (i.e. Let the front loop open to allow the battery to pass through). (Figure 2)
- i.3 While inserting the battery, rotate the battery counterclockwise. The wire of the front loop will ride the battery head and fits itself well inside the neck of the battery. (Figure 3)
- i.4 Wrap the end loop onto the battery and ensure the front loop locks onto the neck of the battery. (Figure 4)
- i.5 Roll the included O-ring/rubber band into the battery's mid groove. (Figure 5)
 - r.1 Remove the O-ring from the battery.
 - r.2 Unhook the end loop of the battery wire connector to allow the first loop to open. (Figure 2).
 - r.3 Rotate the battery clockwise and pull the battery out gently.

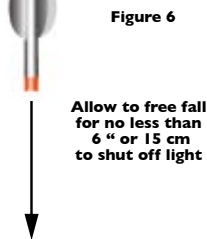


Note: Over-angle to open the battery wire connector can cause the battery wire connector to break and/or cause a micro crack on the circuit board.

Firenock Installation

Caution: If spiderweb Target, small game, or other hard object are the intend target, the use of the optional Extreme Shock Battery End Cap becomes mandatory or the nock will fail and break upon impact.

- a. Follow the O-ring chart below to get best fit for the bolt.
- b. Use a little vegetable oil on the O-ring to ease installation
- c. Use screw in motion to slide Firenock into the shaft until it is fully seated
- d. Align the nock to the string if "C" style nock are used



Allow to free fall for no less than 6" or 15 cm to shut off light

Firenock Deactivation (hunting system)

- a. Align the lighted nock perpendicular to a hard surface.
- b. Lift the arrow no less than 6 inches (15 cm) from the surface
- c. Hold the arrow motionless in mid air for 6-8 seconds
- d. Drop the arrow to allow the arrow to hit the surface nock first via gravitational force. (Figure 6)
- e. Upon impact, the light shall shut off automatically.
- f. If light does not shut off, repeat Step (b - d) and raise the distance in 2-inches (5 cm) increments until the Firenock shuts off.

Note: Counter top, concrete floor, truck bed, hard wood floor are samples of hard surface. If the Firenock does not shut off after the free fall distance is as high as 20 inches (51 cm), and it is within warranty period, please send in your Firenock for warranty replacement.

Firenock Deactivation (target system)

The light will shut off automatically in 17 (+/- 2) seconds.

Firenock Activation

Shooting from any bow which can assert no less than 65G to the arrow when launched or drop on nock as deactivation.

HARD SURFACE

Actual O-ring size

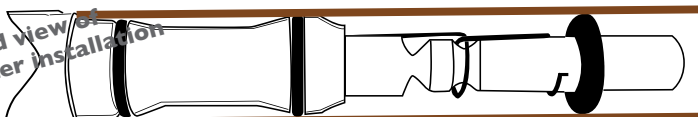
"A" is the thicker of the 2 bigger O-rings, it is also smaller in inside diameter.

"B" is the thinner of the 2 bigger O-rings, it is also larger in inside diameter.

"C" is the thicker of the 2 smaller O-rings, it is also larger in inside diameter.

"D" is the thinner of the 2 smaller O-rings, it is also smaller in inside diameter.

Exposed view of Firenock after installation



AL 2219 ID (0.304")
Gold Tip ID (0.299-0.301")
Easton ID (0.297")

A A
B A
B B

C
D
D